



**Model 700TC(I)  
Integrated Refrigerator/Freezer**

Integrated refrigeration can be used anywhere in the home. It merges seamlessly into the décor, with no visible hinges or grilles. Model 700TC(I) has an upper cabinet refrigerator with freezer storage drawers. Two distinct temperature zones ensure the freshest food and energy efficiency. Model 700TCI features an automatic ice maker.



**Features**

- Integrated design blends invisibly into custom cabinetry
- Dual refrigeration system
- Microprocessor offers precise temperature control
- Electronic digital controls
- Flat-to-the-ceiling bright interior lighting
- Adjustable, spill-proof glass shelves and adjustable door shelves
- Refrigerator deli drawer for storage of smaller items
- Door alarm
- Automatic ice maker (Model 700TCI)
- Exclusive dual-action hinge with built-in 90° door stop
- Meets strict Department of Energy requirements

**Model Options**

	700TC	700TCI
Design	Integrated	Integrated
Automatic Ice Maker		■

**Stainless Steel Panels**

	Classic	Platinum	Carbon
80" Finished Height	■	■	■
84" Finished Height	■		

**Interior Features**

- **Refrigerator**
  - Dual Refrigeration
  - 2 Temperature Zones
  - 3 Adjustable Glass Shelves
  - 1 Stationary Shelf
  - Adjustable Deli Drawer
  - 3 Adjustable Door Shelves
  - Adjustable Dairy Compartment
  - Egg Container
- **Freezer (Drawers)**
  - 2 Removable Drawer Dividers (700TC)
  - 1 Removable Drawer Divider (700TCI)
  - Automatic Defrost
  - Automatic Ice Maker (700TCI)

**Accessories**

- Stainless steel door and drawer panels with tubular handles available in three finishes (see chart above for specifics)
- Polished chrome handles for custom panel applications
- Dozen egg container with lid
- Dual installation heater kit

*Accessories are available through your Sub-Zero dealer. To obtain local dealer information, visit the Showroom Locator section of our website, [subzero.com](http://subzero.com).*

 With the installation of a harness kit, this appliance is certified by Star-K to meet strict religious regulations in conjunction with specific instructions found on [www.star-k.org](http://www.star-k.org).



Classic



Platinum



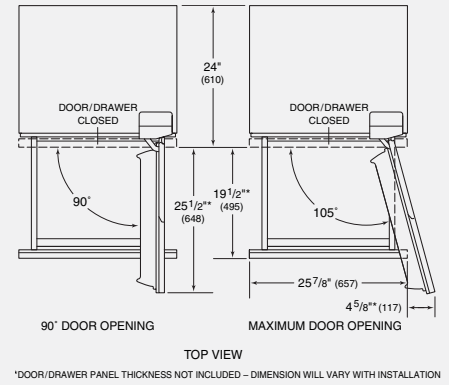
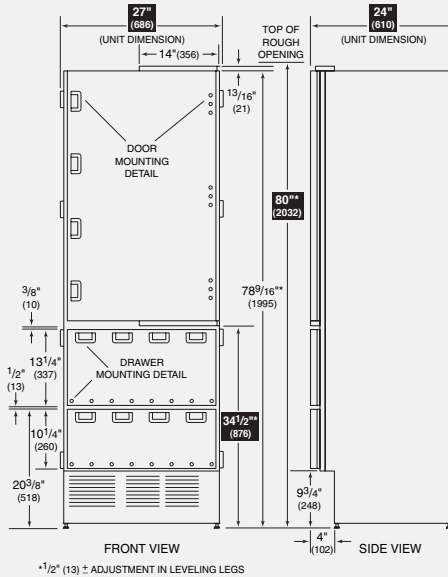
Carbon





**Model 700TC(I)**  
**Integrated Refrigerator/Freezer**

**Overall Dimensions**



Unit dimensions may vary by ± 1/8".

**Specifications**

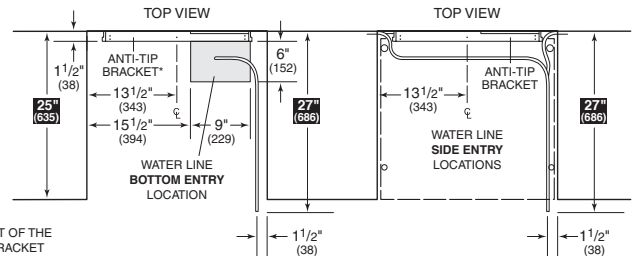
Overall Width	27"
Overall Height	80"
Overall Depth	24"
Door Clearance	25 1/2"
Drawer Clearance	19 1/2"
Refrigerator Capacity	10.2 cu ft
Freezer Capacity	5.1 cu ft
Finished Opening	27" W x 80" H x 25" D*
Electrical Requirements	115 V AC, 60 Hz 15 amp dedicated circuit
Plumbing Requirements (Model 700TCI)	1/4" OD copper line 20–100 psi
Annual Energy Usage	\$52**
Shipping Weight	360 lbs

\*Depth is 24" from the front of the unit to its back. Your design may necessitate moving the unit back, or cabinets forward to achieve a flush fit. This will require a minimum opening depth of 25".

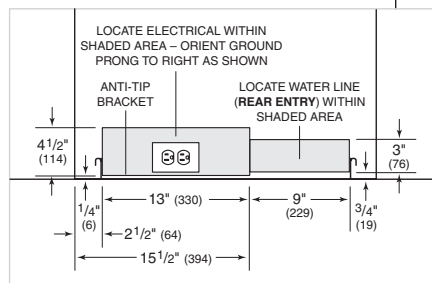
\*\*Based on 9.06 cents per kilowatt hour.

**Installation Specifications**

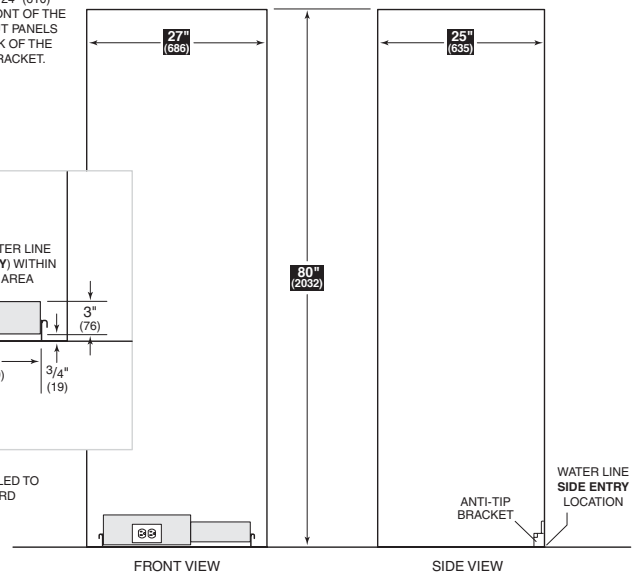
Models without an ice maker will not require the water line connection.



\*PLACEMENT OF THE ANTI-TIP BRACKET SHOULD BE 24" (610) FROM THE FRONT OF THE UNIT WITHOUT PANELS TO THE BACK OF THE ANTI-TIP BRACKET.



NOTE: ANTI-TIP BRACKET MUST BE INSTALLED TO PREVENT UNIT FROM TIPPING FORWARD



**Installation Notes**

Stainless steel panels with handles are available as accessories. Panels for an 80" finished height are offered in classic, platinum and carbon finishes. Panels for an 84" finished height come in the classic finish only. These panels are not installed at the factory.

Complete installation specifications, including panel sizes, can be found on our website, subzero.com.

Dimensions in parentheses are in millimeters unless otherwise specified.